

Malta Export System – Customs Office of Exit (Box 29)

On 1 July 2007 the Export Control System was implemented replacing the manual SAD copy 3 whereby the customs officer confirms exit by stamping and endorsing copy 3 and return it to the declarant. The customs office of exit (box 29) plays an important role because the declarant has to declare from which office of exit the goods will leave the community. During training sessions of the Malta Export System it was emphasized to declare this office, whether local or pertaining to another member state, in coded form. As from **8 January 2009** all export declarations in status code 40 will automatically be uploaded in ECN+ Client. However, the export declaration will be rejected if the customs office of exit (box 29) is not declared in coded form and it has to be amended and uploaded again.

To avoid a great number of rejected export declarations it was decided to stop the export declaration from being saved or submitted as soon as the declarant inputs an incorrect customs office of exit at Box 29 in the Export System (MEX).

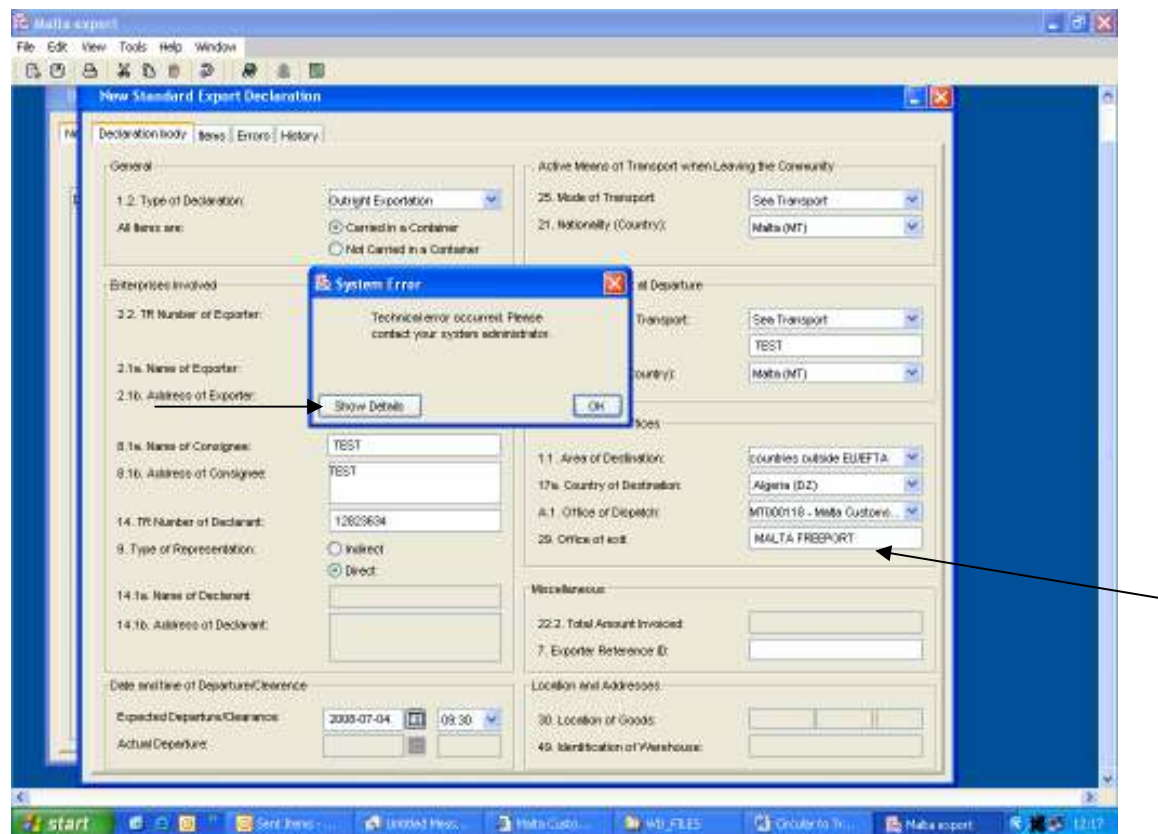


Figure 1

In figure 1 the declarant inserted the free text version of the Office of Exit 'Malta Freeport' instead of the coded form MT000113. When the export declaration is saved the system will generate an error stating 'Technical error occurred. Please contact your system administrator'. Click the 'Show Details' button and scroll up to the first line (see figure 2). If the system exception states 'Can not create DeclarationBody' you must close the Details screen, return to the Declaration Body screen and input the correct (coded) customs office of exit in this example should read MT000113 (see figure 3).

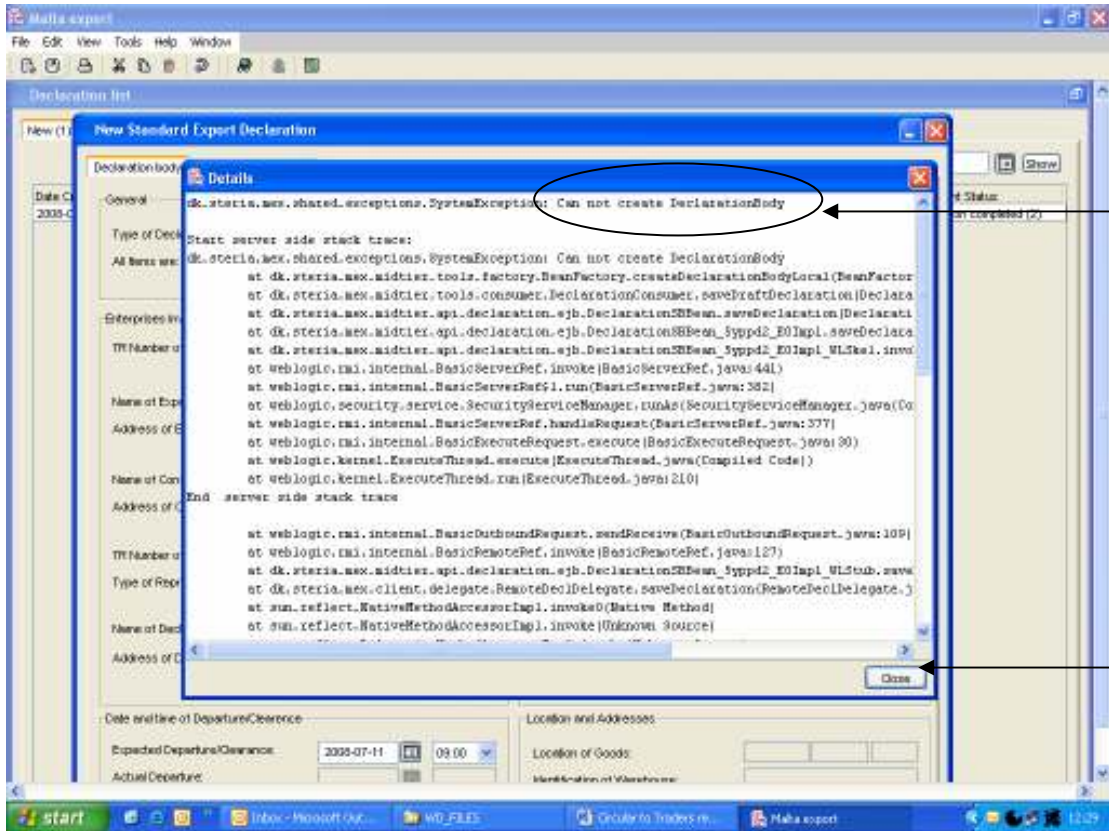


Figure 2

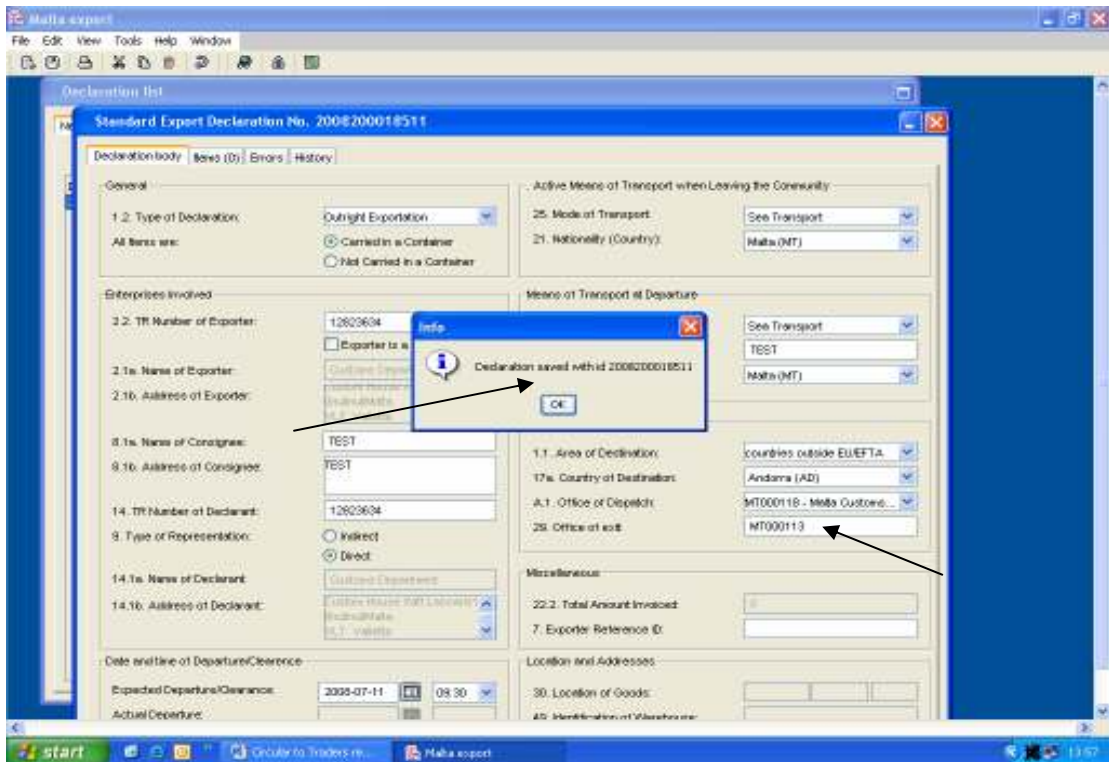


Figure 3

In figure 3 Box 29 has been amended inserting the correct coded Customs Office of Exit and the export declaration was successfully saved. Listed hereunder you will find all local customs offices of exit :

Customs Office List - Microsoft Internet Explorer

File Edit View Favorites Tools Help

Back Forward Stop Search Favorites

Address http://ec.europa.eu/taxation_customs/dds/cts/cts.html?Lang=EN&DestLang=EN&Offset=1&Country=MT&Region=%25&City=%25&Role=CTS&ABRole=4

Taxation and Customs Union

The European Commission > Taxation and Customs Union > Databases > Transit Customs Offices > Customs Office Information > Customs Office List

Mail Box Search

Help | What's New | Information | FAQ

Customs Office List

Country: Malta - MT (046) Roles EXT 11

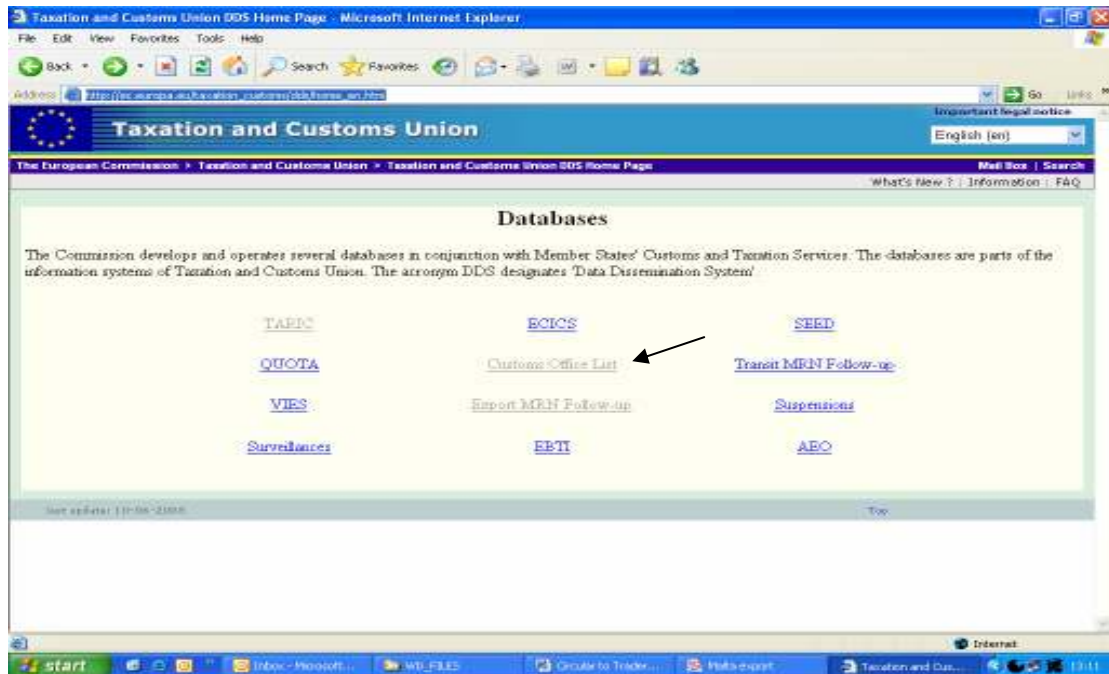
Row	City	Usual Name	Ref.No.
1	Luga	CTS-Aufreight (Luga)	MT000102
2	Marsa	CTS-Baggage Em-Grand Harbour	MT000103
3	Marsa	CTS-DWQ-Shed 3	MT000107
4	VALLETTA	CO - FUEL SECTION	MT000108
5	Kordin	CTS-Lab Wharf	MT000109
6	BOBMLA	CTS-DOCKYARD STATION	MT000110
7	Gzira	CTS - Manoel Island Yacht Yard	MT000112
8	Birzebbuga	CTS-Malta Free Port	MT000113
9	Marsa	CTS - P.P.O. Malta	MT000114
10	Luga	CTS-Counter Section	MT000117
11	GUDJA	CTS - MIA DEPARTURES	MT000123

Done Internet

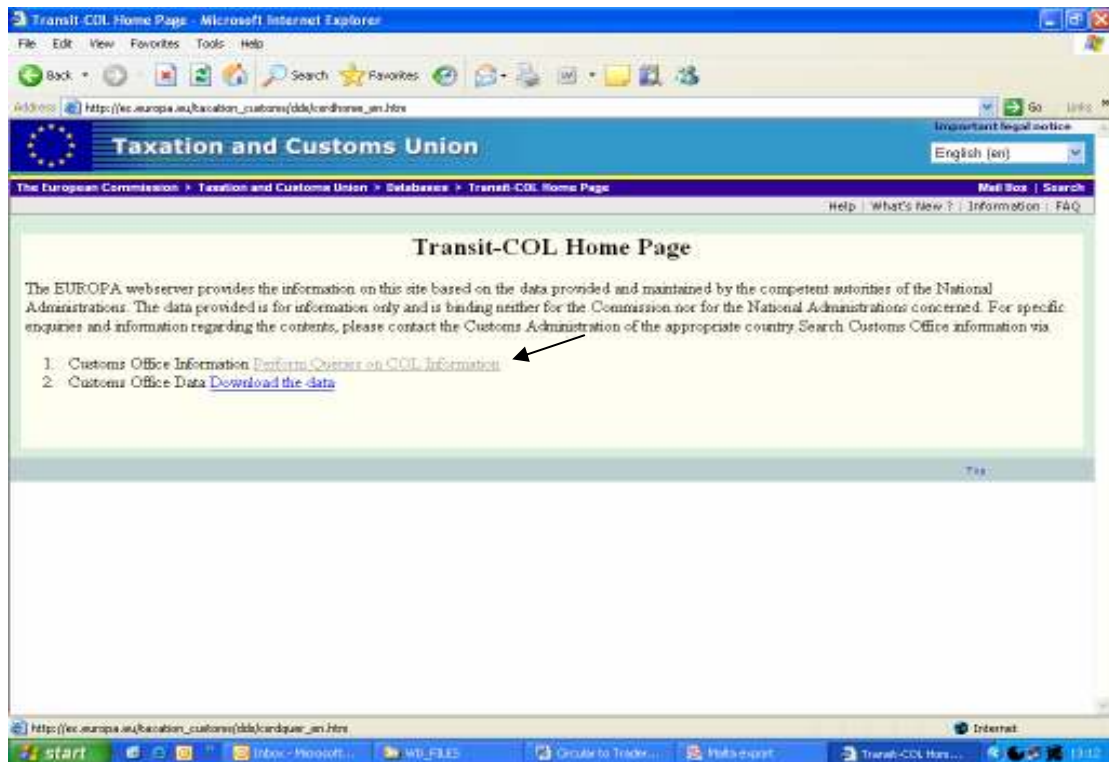
start Inbox - Microsoft... WI_FILES Create to Trade... Malta export Customs Office U... 12:09

If in box 29 you need to declare a customs office of exit of another member state the following screens will show you step by step how to find the coded form in the Customs Office List database of the European Commission.

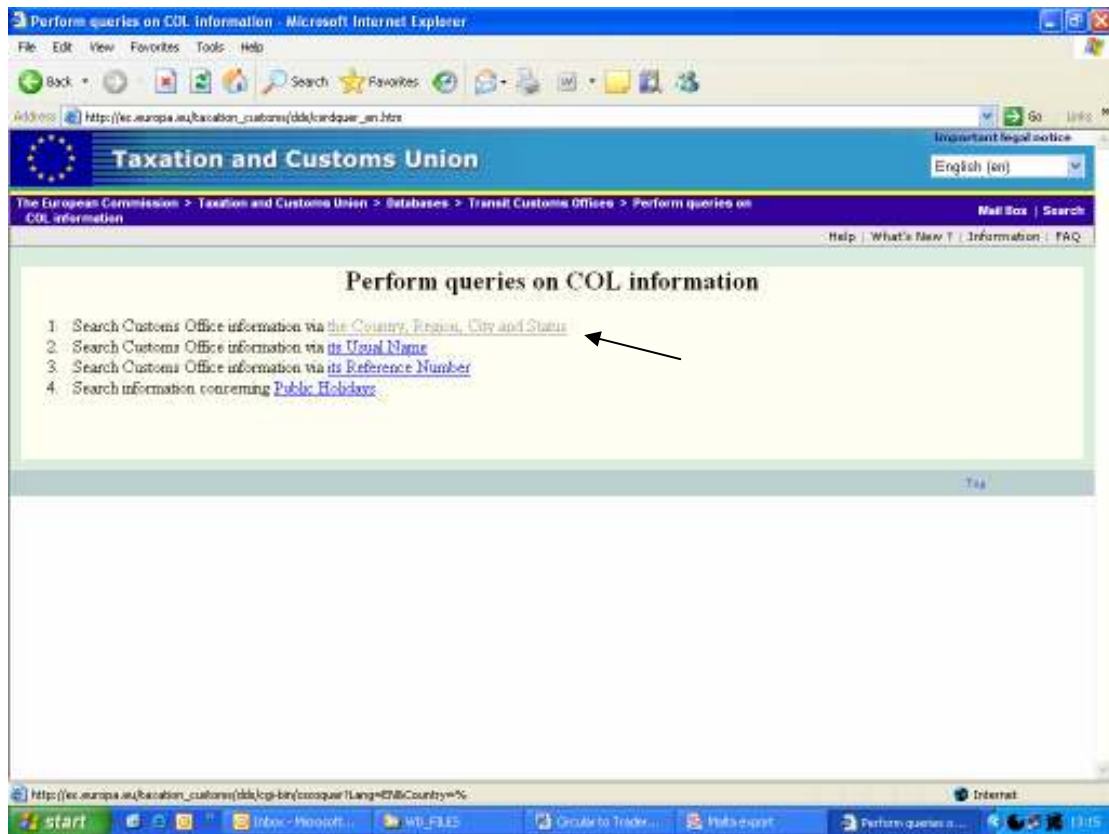
http://ec.europa.eu/taxation_customs/dds/home_en.htm



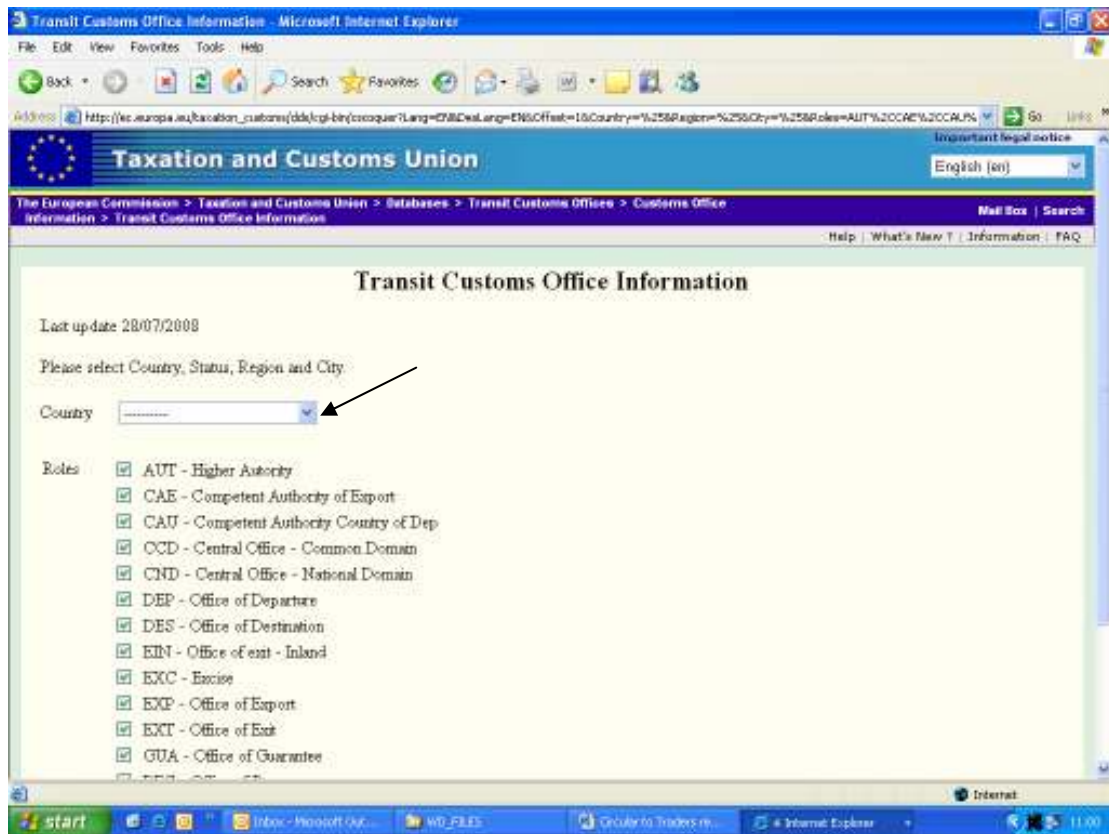
Step 1 : Choose Customs Office List



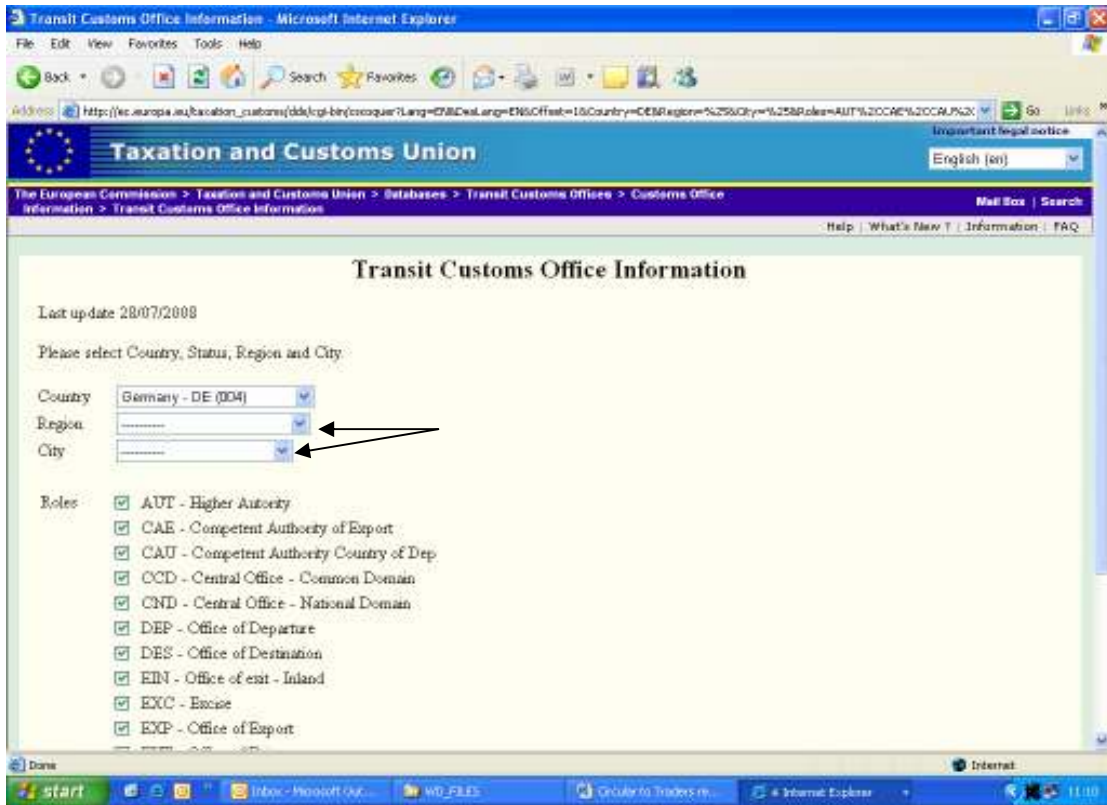
Step 2 : Click on Perform Queries on COL (Customs Office List) Information



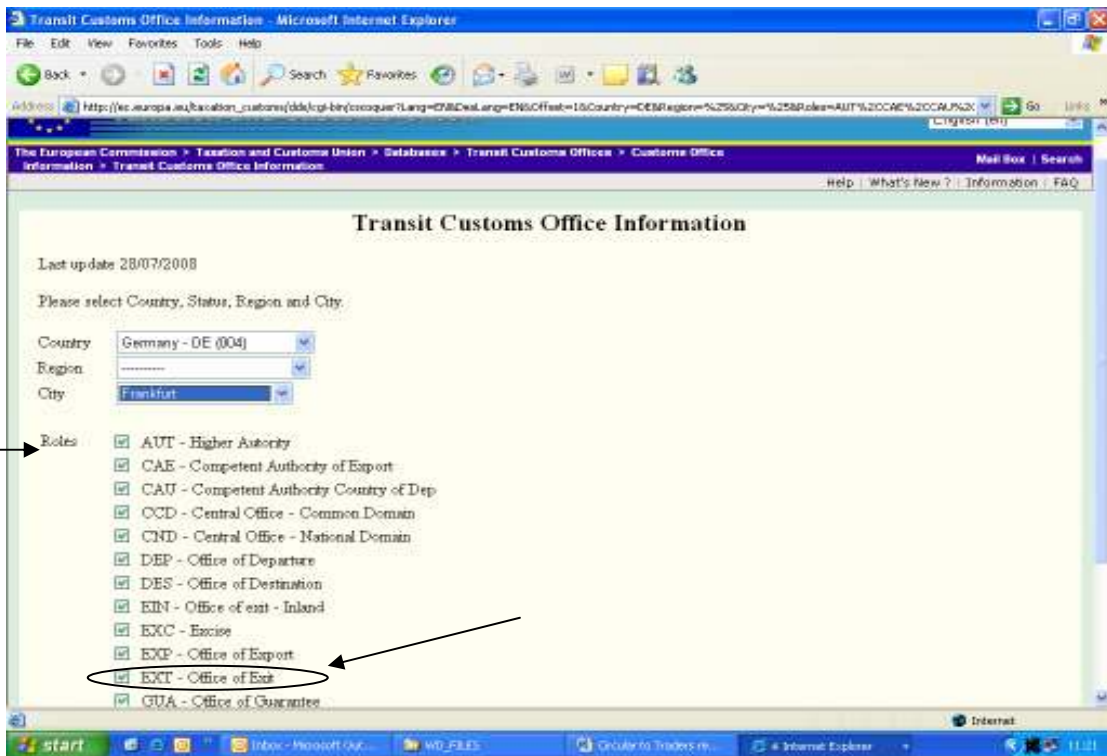
Step 3 : Click on Country, Region, City and Status



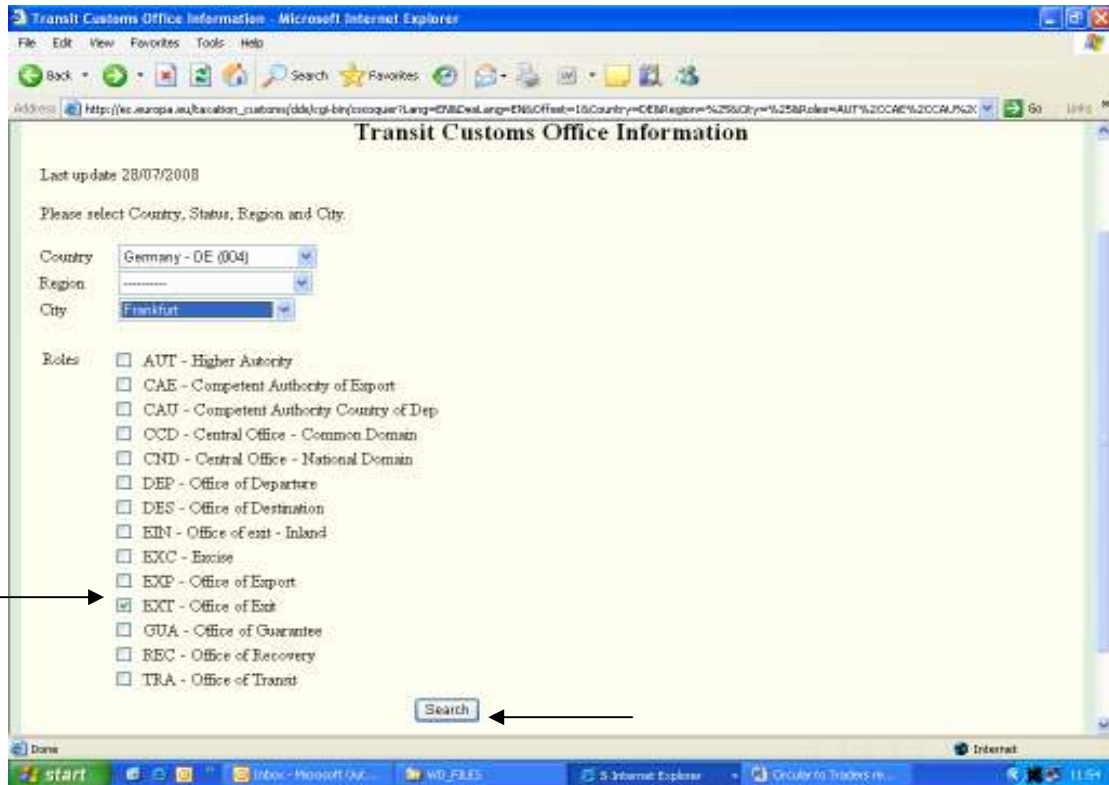
Step 4 : Click on drop down arrow and choose country required



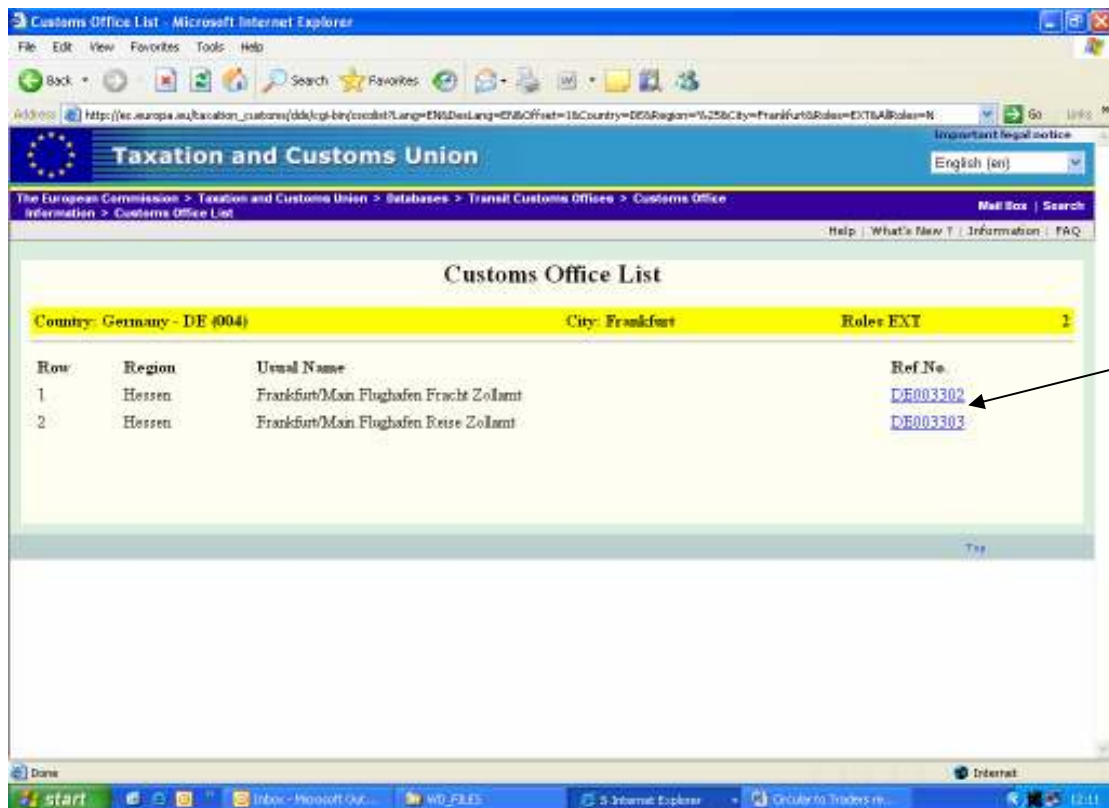
Step 5 : If you know region and/or city you can choose these to have a more concise list



Step 6 : Please note that all office roles are checked (that is green arrow in small box on the left of each office role). You must uncheck all these boxes (by clicking once in this box) except for the EXT – Office of Exit



Step 7 : Please note here that all office roles have been unchecked except for EXT – Office of Exit. Now click on search



Step 8 : Choose the required coded office of exit and declare in Box 29 of Malta Export System

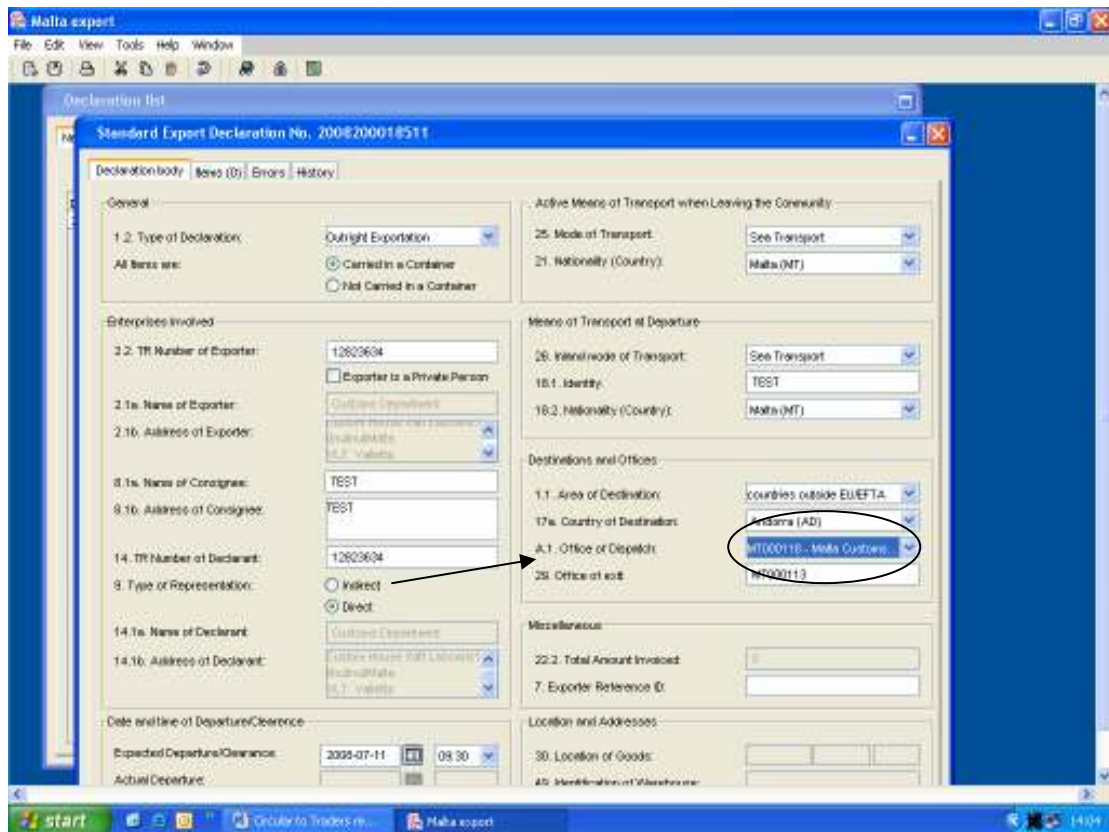


Figure 4

You are reminded in figure 4 to always choose MT000118 (CEPU) for box A.1. Office of Dispatch/Export. This is the only Customs Office of Export in Malta.

This circular will be available on the Customs Portal under Information Sheets for CES (<http://ces.gov.mt/index.jsp>) and Malta Customs Website (<http://maltacustoms.gov.mt>)

Should you require any more information or assistance please contact :

Mr Mario Grech +356 25685143
 Ms Laura Cutajar +356 25685149